

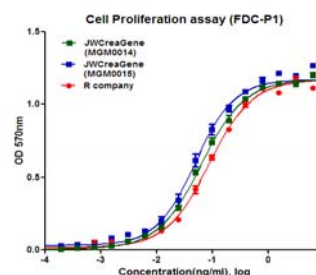
## DATA SHEET

### Product Information

<b>Product Name</b>	: <b>Recombinant Mouse Granulocyte Macrophage Colony Stimulating Factor (rmGM-CSF)</b>
<b>Synonyms</b>	: Colony-stimulating factor (CSF)
<b>Description</b>	: Recombinant Mouse GM-CSF produced in <i>E. coli</i> is a non-glycosylated 14 kDa protein containing 125 amino acids. GM-CSF produced by monocytes, T-lymphocytes, endothelial cells and fibroblasts. It is a hematopoietic growth factor that stimulates the development of macrophages and neutrophils and promotes the proliferation of early erythroid megakaryocytes.
<b>NCBI Accession No.</b>	: NM_009969.4
<b>Amino acid sequence</b>	: MAPTRSPITVTRPWKHVEAIKEALNLLDDMPVTLNEEVEVVSNEFSFKKLT VQTRLKIFEQGLRGNFTKLGALNMTASYQTYCPPTPETDCETQVTYYADF IDSLKTFLTDIPFECKKPGQK
<b>Molecular Mass</b>	: 14.21 kDa (125 aa)
<b>Protein Tags</b>	: No tagging
<b>Source</b>	: <i>E. coli</i> .
<b>Cat. No.</b>	: MGM-10, MGM-25, MGM-50, MGM-100, MGM-250, MGM-500
<b>Storage</b>	: Should be at $\leq -70$ °C as undiluted aliquots of handy size. Avoid repeated freezing and thawing.
<b>Cross Reactivity</b>	: Rat

### Quality Control

Test items	Specifications
<b>Appearance</b>	: Clear, colorless liquid
<b>Purity</b>	: Greater than 98 % by RP-HPLC and SDS-PAGE
<b>Specificity</b>	: Using Western blot, detection
<b>Concentration</b>	: 0.1 mg/ml, Bradford method
<b>Biological Activity</b>	: Determined by measuring the proliferation of murine FDC-P1 indicator cells. The ED <sub>50</sub> is < 0.1 ng/ml, corresponding to a specific activity of > 1.0 × 10 <sup>7</sup> U/mg.
<b>Endotoxin</b>	: Less than 0.2 EU/μg as determined by the LAL method
<b>Formulation</b>	: PBS (pH 7.0-8.0) without preservative or carrier proteins.
<b>Stability</b>	: Stable for up to 12 months at -70 °C. Stable for a month at 4 °C.
<b>Sterility</b>	: Sterilized through a 0.2 μm membrane filter and packaged aseptically. Culture for 2 weeks, no growth



**Manufacturer** : **JW CreaGene Inc.**  
 FL2, Jungang induspia V, 138-6, Sangdaewon-dong, Jungwon-gu, Seongnam-si,  
 Gyeonggi-do, South Korea (462-120)  
 Tel: 82-31-737-3310, Fax: 82-31-737-3301